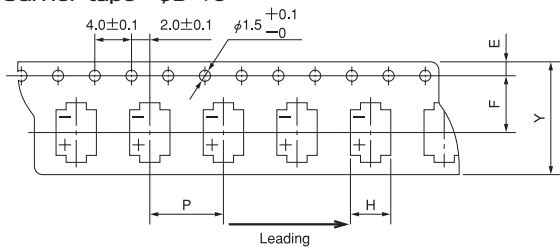


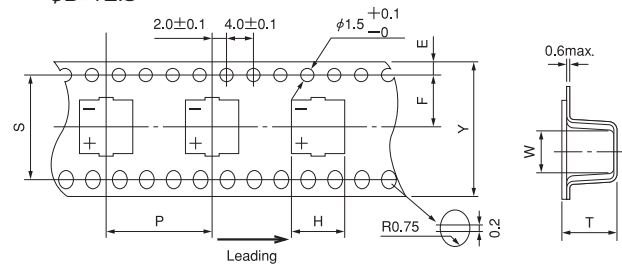
Packaging Specifications

■ Surface Mount Type Taping Specifications (Unit:mm)

Carrier tape $\phi D \leq 10$



$\phi D \geq 12.5$

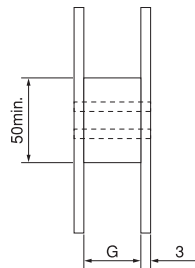
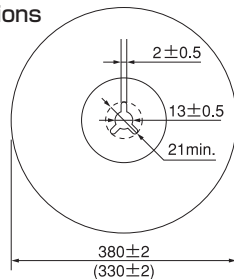


(Unit:mm)

size($\phi D \times L$)	$Y \pm 0.3$	$H \pm 0.2$	$W \pm 0.2$	$P \pm 0.1$	$E \pm 0.1$	$F \pm 0.1$	$T \pm 0.2$	$S \pm 0.1$
$\phi 4 \times 5.4$	12.0	4.7	4.7	8.0	1.75	5.5	5.8	—
$\phi 4 \times 6.0$	12.0	4.7	4.7	8.0	1.75	5.5	6.4	—
$\phi 5 \times 5.4$	12.0	5.7	5.7	12.0	1.75	5.5	5.8	—
$\phi 5 \times 6.0$	12.0	5.7	5.7	12.0	1.75	5.5	6.4	—
$\phi 5 \times 7.0$	12.0	5.7	5.7	12.0	1.75	5.5	7.1	—
$\phi 6.3 \times 4.5$	16.0	7.0	7.0	12.0	1.75	7.5	5.1	—
$\phi 6.3 \times 5.4$	16.0	7.0	7.0	12.0	1.75	7.5	5.8	—
$\phi 6.3 \times 6.0$	16.0	7.0	7.0	12.0	1.75	7.5	6.5	—
$\phi 6.3 \times 7.0$	16.0	7.0	7.0	12.0	1.75	7.5	7.5	—
$\phi 6.3 \times 7.7$	16.0	7.0	7.0	12.0	1.75	7.5	8.2	—
$\phi 6.3 \times 8.4$	16.0	7.0	7.0	12.0	1.75	7.5	9.2	—
$\phi 8 \times 10.2(10.5)$	24.0	8.7	8.7	16.0	1.75	11.5	11.1	—
$\phi 10 \times 10.2(10.5)$	24.0	10.7	10.7	16.0	1.75	11.5	11.2	—
$\phi 10 \times 12.5$	24.0	10.7	10.7	16.0	1.75	11.5	13.3	—
$\phi 10 \times 13.5(13.8)$	24.0	10.7	10.7	16.0	1.75	11.5	14.6	—
$\phi 10 \times 16.5$	24.0	10.7	10.7	16.0	1.75	11.5	17.7	—
$\phi 12.5 \times 13.5$	32.0	13.2(13.9★)	13.2(13.9★)	24.0	1.75	14.2	14.3(14.7★)	28.4
$\phi 16 \times 16.5$	44.0	17.5	17.5	28.0	1.75	20.2	17.3(17.8★)	40.4
$\phi 16 \times 21.5$	44.0	17.5	17.5	28.0	1.75	20.2	22.8	40.4
$\phi 18 \times 16.5$	44.0	19.5	19.5	32.0	1.75	20.2	17.8	40.4
$\phi 18 \times 21.5$	44.0	19.5	19.5	32.0	1.75	20.2	22.5	40.4

★ Anti-vibration Structure : CA Type

Reel dimensions



(Unit:mm)

	G
$\phi 4, \phi 5$	14
$\phi 6.3$	18
$\phi 8, \phi 10$	26
$\phi 12.5$	34
$\phi 16, \phi 18$	46

Minimum Packing Quantity

$\phi D \times L$ (mm)	Quantity of 1 Reel($\phi 380$)	Quantity of 1 Reel($\phi 330$)	Quantity of 1 package(Reel)
$\phi 4 \times 5.4$	2000	—	5
$\phi 4 \times 6.0$	2000	—	5
$\phi 5 \times 5.4$	—	1000	5
$\phi 5 \times 6.0$	1000	—	5
$\phi 5 \times 6.0$ EP-cap	1200 ★2	—	5
$\phi 5 \times 7.0$	1000	—	5
$\phi 6.3 \times 4.5$	—	1000	5
$\phi 6.3 \times 5.4$	—	1000	5
$\phi 6.3 \times 6.0$	1000	—	5
$\phi 6.3 \times 7.0$	1000	—	5
$\phi 6.3 \times 7.7$	900	—	5
$\phi 6.3 \times 8.4$	800	—	5
$\phi 8 \times 10.2(10.5)$	500	—	3
$\phi 10 \times 10.2(10.5)$	500	—	3
$\phi 10 \times 12.5$	400	—	3
$\phi 10 \times 13.5(13.8)$	400	—	3
$\phi 10 \times 16.5$	325	—	3
$\phi 12.5 \times 13.5$	250 ★1	—	2
$\phi 16 \times 16.5$	200 ★1	—	2
$\phi 16 \times 21.5$	150 ★2	—	2
$\phi 18 \times 16.5$	175	—	2
$\phi 18 \times 21.5$	125	—	2

Please place your orders with an integral multiple of the minimum packing quantity.

★1 "+D" has to be put after the part number.

Example
25CE2200LXT+D

★2 "+PN" has to be put after the part number.

(For EP-Cap, the quantity per reel is 1200pcs.)

Example
25HVFPF33M+PN
25CE2700PHT+PN

The suffix "+P" at the end of the part number indicates a plastic reel.

Example
16CE470LX+P
25CE2200LXT+DP

Radial Lead Type Taping Specifications for Automatic Inserting Machines

Fig.1

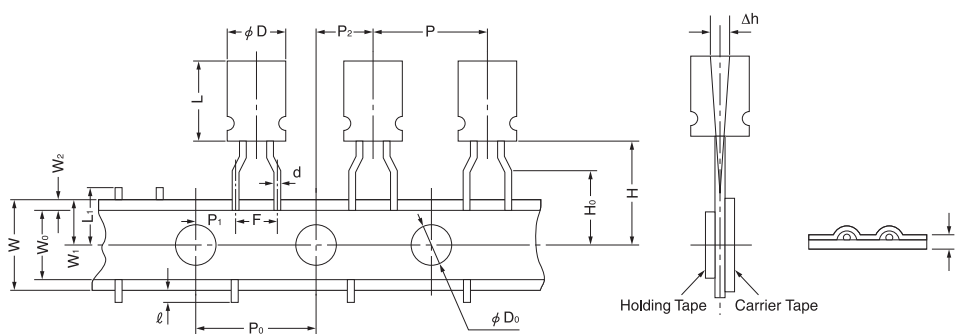


Fig.2

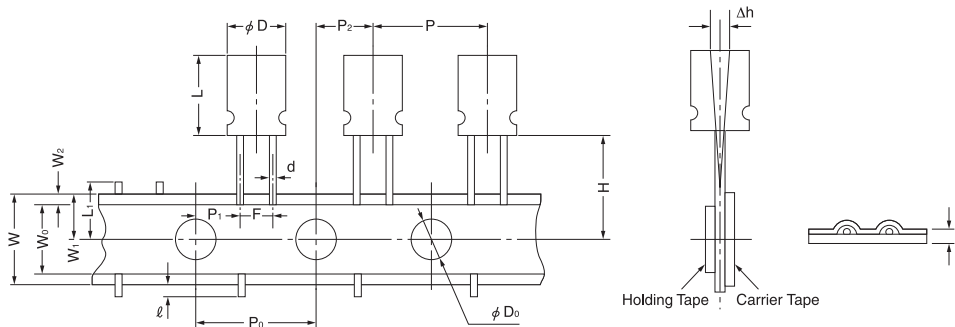
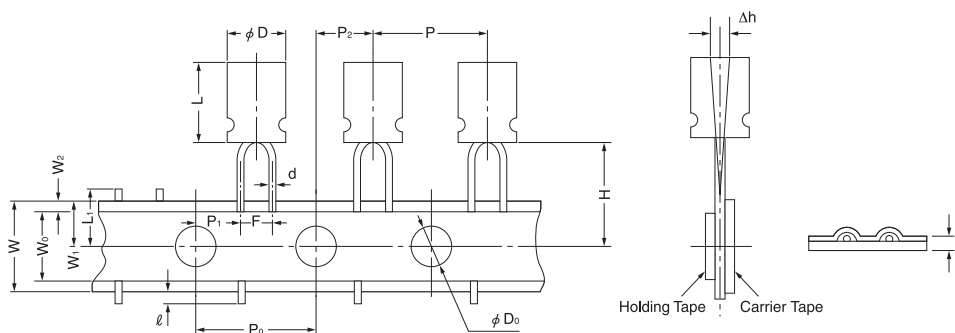


Fig.3



(Unit:mm)

Product Outer Dimensions		φ4 to φ6.3x7 φ6.3x7.5	φ5x11 φ6.3x11	φ8	φ10	φ12.5x20 φ12.5x25	φ16 x25	φ4 to φ5x7	φ6.3x7 φ6.3x7.5	φ5 x11	φ6.3 x11	φ8
Fig. No.		1	1	1	2	2	★3	3	2	3	2	2
Lead wire interval	F	± 0.8 -0.2 ★1	5.0	5.0	5.0	5.0	7.5	2.5	2.5	2.5	2.5	3.5
Pitch between components	P	± 1.0	12.7	12.7	12.7	12.7	15.0	30.0	12.7	12.7	12.7	12.7
Sprocket hole pitch	P ₀	± 0.2	12.7	12.7	12.7	12.7	15.0	15.0	12.7	12.7	12.7	12.7
Sprocket hole position	P ₁	± 0.5	3.85	3.85	3.85	3.85	5.0	3.75	5.1	5.1	5.1	4.6
	P ₂	± 1.0	6.35	6.35	6.35	6.35	7.5	7.5	6.35	6.35	6.35	6.35
Lateral deviation	Δh	± 1.0	0	0	0	0	0	0	0	0	0	0
Carrier tape width	W	± 0.5	18.0	18.0	18.0	18.0	18.0	18.0	18.0	18.0	18.0	18.0
Holding tape width	W ₀	min.	6.0	6.0	6.0	6.0	11.5	6.0	6.0	6.0	6.0	6.0
Sprocket hole position	W ₁	± 0.5	9.0	9.0	9.0	9.0	9.0	9.0	9.0	9.0	9.0	9.0
Holding tape position	W ₂	max.	2.5	2.5	2.5	2.5	2.5	2.5	2.5	2.5	2.5	2.5
Component-base height	H	± 0.75 ★2	17.5	18.5	20.0	16.0	18.5	16.0	18.5	17.5	18.5	18.5
Lead wire clinch height	H ₀	± 0.5	16.0	16.0	16.0	—	—	—	—	—	—	—
Sprocket hole diameter	φD ₀	± 0.2	4.0	4.0	4.0	4.0	4.0	4.0	4.0	4.0	4.0	4.0
Tape thickness(in total)	t	± 0.3	0.6	0.6	0.6	0.6	0.6	0.6	0.6	0.6	0.6	0.6
Lead wire protrusion	ℓ	max.	0	0	0	0	0	0	0	0	0	0
Cut position of failures	L ₁	max.	11.0	11.0	11.0	11.0	11.0	11.0	11.0	11.0	11.0	11.0
Taping code(standard)	Zig-Zag type	+T	+T	+T	+T	+T	+T	+T	+TS	+TS	+TS	+TS

For EP-cap, only straight taping(Fig.2) is available for φ8/φ10 diameters.

The taping code has to be put after the part number.

Part number 16ME100HC+T

Taping code

+T0, +TS0 (0=Zero)

★1 Fig.2, Fig.3:±0.5

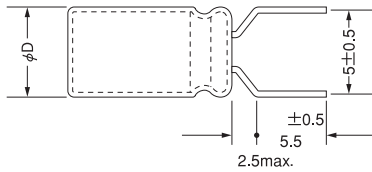
★2 φ10 · φ12.5 with H=18.5:±0.5

★3 φ16 every two slots in Fig.2

Packaging Specifications

Radial Lead Type Lead-wire Process Standard Specification (Unit:mm)

1. Lead-wire forming for $\phi D=5,6.3,8\text{mm}$.

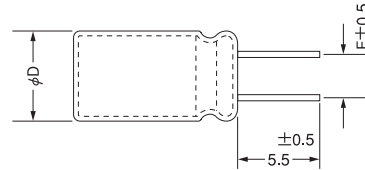


Lead-wire forming is unavailable for EP-cap.
For EP-cap, only lead-wire cutting is available for 10 X 9.5/10 X 11.5 case sizes.

The following lead process symbols have to be put after the part number.
Please contact us if a different length of lead-wire is required.

+FA for lead-wire forming Example) 16ME100CA+FA
+CA for lead-wire cutting Example) 200ME10FH+CA

2. Lead-wire cutting



(Unit:mm)

ϕD	5	6.3	8	10	12.5	16	18
F	2.0	2.5	3.5	5.0	5.0	7.5	7.5

Part number

Example

6 Rated voltage ★1	CE Type symbol ★2	100 Rated capacitance symbol ★3	LX Series symbol			
35 Rated voltage ★1	HV Type symbol ★2	HZ Series symbol	100 Rated capacitance symbol ★3	M Capacitance tolerance	+P Reel symbol ★4	
63 Rated voltage ★1	FV Type symbol ★2	F Series symbol	100 Rated capacitance symbol ★3	M Capacitance tolerance	+P Reel symbol ★4	
63 Rated voltage ★1	FV Type symbol ★2	F Series symbol	100 Rated capacitance symbol ★3	M Capacitance tolerance	S Size type symbol ★5	+P Reel symbol ★4

★3

Rated capacitance(μF)	Symbol
0.47	R47
1.0	1
4.7	4R7
10	10
100	100
1000	1000
10000	10000

- ★1. 6 represents 6.3V as the rated voltage.
- ★2. Type symbol
CE, HV, FV : Surface mount type
ME, HE, FE : Radial lead type
CA, HA, HC, FA, FC : Surface mount type (Anti-vibration structure)
- ★3. R represents the decimal point.
- ★4. Only plastic reels are available for EP-cap. (For the $\phi D=5$, put "+PN")
- ★5. To indicate one rank smaller size. (S type)
Example) 63FVF100M+P : $\phi 10 \times 12.5$
63FVF100MS+P : $\phi 10 \times 10.5$

Minimum Packing Quantity

Bulk

Size	Quantity	Remarks reference
$\phi 4$ to $\phi 8$ ★1	500 PCS.	★1 $\phi 8 \times 12.5\text{L}$; 200 PCS. (ME-WA, ME-WG series Size $\phi 8 \times 11.5\text{L}$; 200 PCS.) ★2 $\phi 12.5 \times 30\text{L}$; 100 PCS. ★3 $\phi 16 \times 35.5\text{L}$; 50 PCS. Surface Mount Type ; Please refer to page 13
$\phi 10$ to $\phi 12.5$ ★2	200 PCS.	
$\phi 16$ ★3	100 PCS.	
$\phi 18$	50 PCS.	

Taping

Size	Quantity
$\phi 4$	4000 PCS.
$\phi 5$	3000 PCS.
$\phi 6.3$	2500 PCS.
$\phi 8$	1400 PCS.
$\phi 10$	900 PCS.
$\phi 12.5$	600 PCS.
$\phi 16$	250 PCS.

Please place your orders with an integral multiple of the minimum packing quantity.