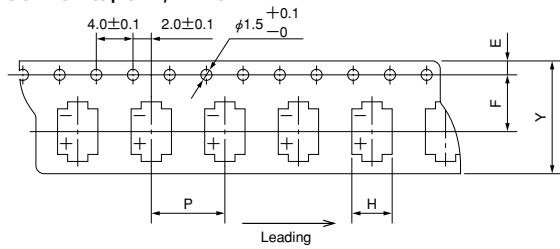
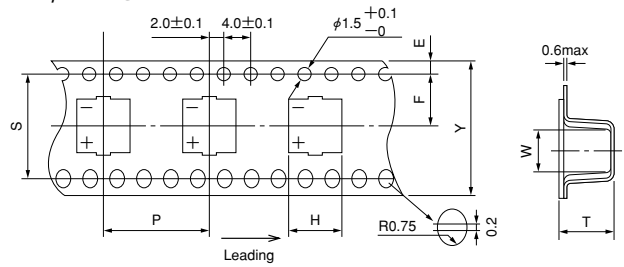


■ Surface Mount Type Taping Specifications (Unit:mm)

Carrier tape $\phi D \leq 10$



$\phi D \geq 12.5$

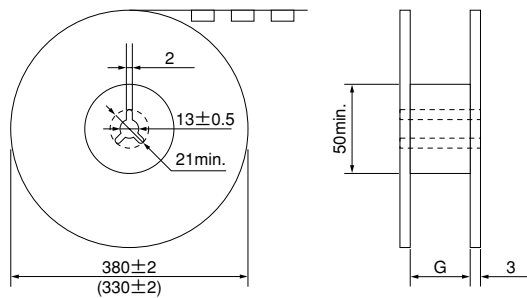


(Unit:mm)

size ($\phi D \times L$)	$Y \pm 0.3$	$H \pm 0.2$	$W \pm 0.2$	$P \pm 0.1$	$E \pm 0.1$	$F \pm 0.1$	$T \pm 0.2$	$S \pm 0.1$
$\phi 3 \times 5.4$	12.0	3.7	3.7	8.0	1.75	5.5	5.8	—
$\phi 4 \times 4.5$	12.0	4.7	4.7	8.0	1.75	5.5	5.0	—
$\phi 4 \times 5.4$	12.0	4.7	4.7	8.0	1.75	5.5	5.8	—
$\phi 4 \times 6.0$	12.0	4.7	4.7	8.0	1.75	5.5	6.4	—
$\phi 5 \times 3.9$	12.0	5.7	5.7	12.0	1.75	5.5	4.5	—
$\phi 5 \times 4.5$	12.0	5.7	5.7	12.0	1.75	5.5	5.0	—
$\phi 5 \times 5.4$	12.0	5.7	5.7	12.0	1.75	5.5	5.8	—
$\phi 5 \times 6.0$	12.0	5.7	5.7	12.0	1.75	5.5	6.4	—
$\phi 5 \times 7.0$	12.0	5.7	5.7	12.0	1.75	5.5	7.1	—
$\phi 6.3 \times 3.25$	16.0	7.0	7.0	12.0	1.75	7.5	3.8	—
$\phi 6.3 \times 3.9$	16.0	7.0	7.0	12.0	1.75	7.5	4.5	—
$\phi 6.3 \times 4.5$	16.0	7.0	7.0	12.0	1.75	7.5	5.1	—
$\phi 6.3 \times 5.4$	16.0	7.0	7.0	12.0	1.75	7.5	5.8	—
$\phi 6.3 \times 6.0$	16.0	7.0	7.0	12.0	1.75	7.5	6.5	—
$\phi 6.3 \times 7.0$	16.0	7.0	7.0	12.0	1.75	7.5	7.5	—
$\phi 6.3 \times 7.7$	16.0	7.0	7.0	12.0	1.75	7.5	8.2	—
$\phi 6.3 \times 8.4$	16.0	7.0	7.0	12.0	1.75	7.5	9.2	—
$\phi 8 \times 10.2 (10.5)$	24.0	8.7	8.7	16.0	1.75	11.5	11.1	—
$\phi 10 \times 7.7$	24.0	10.7	10.7	16.0	1.75	11.5	8.3	—
$\phi 10 \times 10.2 (10.5)$	24.0	10.7	10.7	16.0	1.75	11.5	11.2	—
$\phi 10 \times 12.5$	24.0	10.7	10.7	16.0	1.75	11.5	13.3	—
$\phi 10 \times 13.5$	24.0	10.7	10.7	16.0	1.75	11.5	14.5	—
$\phi 12.5 \times 13.5$	32.0	13.2 (13.9★)	13.2 (13.9★)	24.0	1.75	14.2	14.3 (14.7★)	28.4
$\phi 16 \times 16.5$	44.0	17.5	17.5	28.0	1.75	20.2	17.3 (17.8★)	40.4
$\phi 18 \times 16.5$	44.0	19.5	19.5	32.0	1.75	20.2	17.8	40.4

★ Anti-vibration Structure : CA Type

Reel



(Unit:mm)

	G
$\phi 3, \phi 4, \phi 5$	14
$\phi 6.3$	18
$\phi 8, \phi 10$	26
$\phi 12.5$	34
$\phi 16, \phi 18$	46

Minimum Packing Quantity

$\phi D \times L$ (mm)	Quantity of 1 Reel($\phi 380$)	Quantity of 1 Reel($\phi 330$)	Quantity of 1 package(Reel)
$\phi 3 \times 5.4$	2000	1500 ★1	5
$\phi 4 \times 4.5$	2000	1500 ★1	5
$\phi 4 \times 5.4$	2000	1500 ★1	5
$\phi 4 \times 6.0$	2000	1200 ★1	5
$\phi 5 \times 3.9$	—	1000	5
$\phi 5 \times 4.5$	—	1000	5
$\phi 5 \times 5.4$	—	1000	5
$\phi 5 \times 6.0$	1000	800 ★1	5
$\phi 5 \times 7.0$	1000	800 ★1	5
$\phi 6.3 \times 3.25, 3.9$	—	1000	5
$\phi 6.3 \times 4.5$	—	1000	5
$\phi 6.3 \times 5.4$	—	1000	5
$\phi 6.3 \times 6.0$	1000	800 ★1	5
$\phi 6.3 \times 7.0$	1000	800 ★1	5
$\phi 6.3 \times 7.7$	900	500 ★1	5
$\phi 6.3 \times 8.4$	800	500 ★1	5
$\phi 8 \times 10.2 (10.5)$	500	300 ★1	3
$\phi 10 \times 7.7$	500	400 ★1	3
$\phi 10 \times 10.2 (10.5)$	500	300 ★1	3
$\phi 10 \times 12.5$	400	300 ★1	3
$\phi 10 \times 13.5$	400	—	3
$\phi 12.5 \times 13.5$	250 ★2	—	2
$\phi 16 \times 16.5$	200 ★2	—	2
$\phi 18 \times 16.5$	175	—	2

★1 Reel code has to be specified after the model number.

Model No. 25CE47BS+E
Reel code

★2 Reel code has to be specified after the model number.

Model No. 25CE2200LXT+D
Reel code

When you place an order, please make sure that order should be integral multiple of the minimum packing unit.

Radial Lead Type Taping Specifications for Automatic Inserting Machines

Fig.1

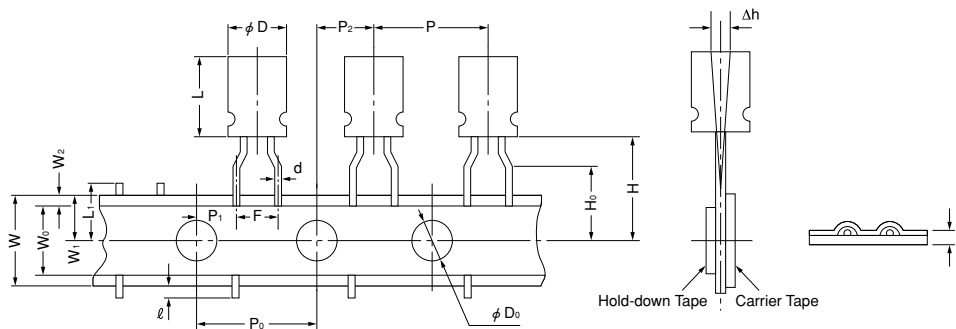


Fig.2

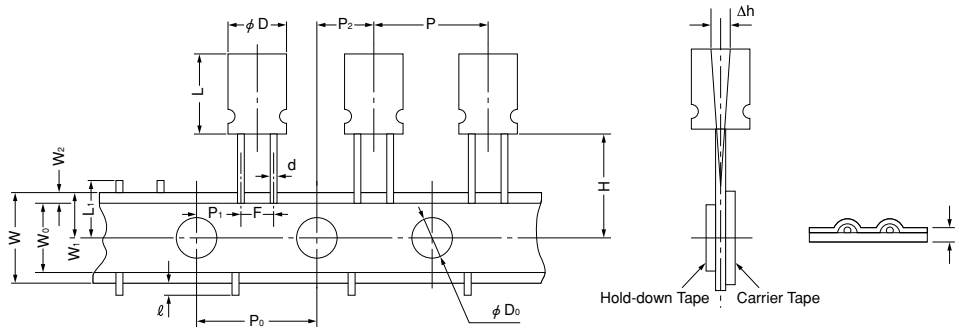
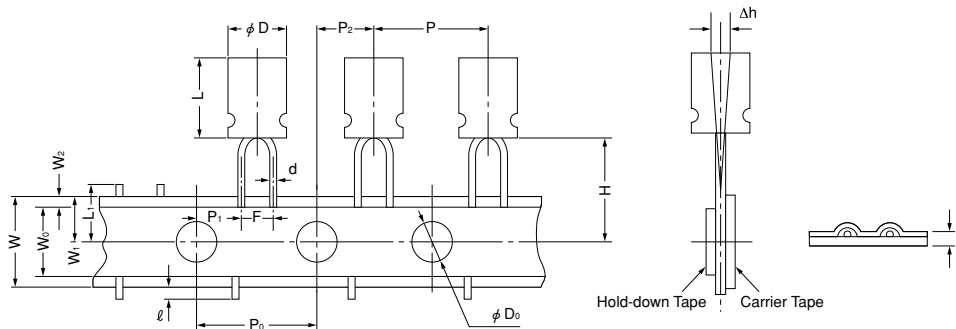


Fig.3



(Unit:mm)

Product Outer Dimensions		φ6.3×5 φ4 to φ6.3×7 φ6.3×7.5	φ5×11 φ6.3×11	φ8	φ10	φ12.5×20 φ12.5×25	φ16 ×25	φ4 to φ5×7	φ6.3×5 φ6.3×7 φ6.3×7.5	φ5 ×11	φ6.3 ×11	φ8				
Fig. No.		1	1	1	2	2	★3	3	2	3	2	2				
Lead wire interval	F	$\pm 0.8 \star 1$	5.0	5.0	5.0	5.0	7.5	2.5	2.5	2.5	2.5	3.5				
Pitch between components	P	± 1.0	12.7	12.7	12.7	12.7	15.0	30.0	12.7	12.7	12.7	12.7				
Sprocket hole pitch	P ₀	± 0.2	12.7	12.7	12.7	12.7	15.0	15.0	12.7	12.7	12.7	12.7				
Sprocket hole position	P ₁	± 0.5	3.85	3.85	3.85	3.85	5.0	3.75	5.1	5.1	5.1	4.6				
	P ₂	± 1.0	6.35	6.35	6.35	6.35	7.5	7.5	6.35	6.35	6.35	6.35				
Lateral deviation	Δh	± 1.0	0	0	0	0	0	0	0	0	0	0				
Carrier tape width	W	± 0.5	18.0	18.0	18.0	18.0	18.0	18.0	18.0	18.0	18.0	18.0				
Hold-down tape width	W ₀	min.	6.0	6.0	6.0	6.0	11.5	11.5	6.0	6.0	6.0	6.0				
Sprocket hole position	W ₁	± 0.5	9.0	9.0	9.0	9.0	9.0	9.0	9.0	9.0	9.0	9.0				
Hold-down tape position	W ₂	max.	2.5	2.5	2.5	2.5	2.5	2.5	2.5	2.5	2.5	2.5				
Component-base height	H	$\pm 0.75 \star 2$	17.5	18.5	20.0	16.0 18.5	16.0 18.5	18.5	17.5 18.5	17.5 18.5	18.5	18.5				
Lead wire clinch height	H ₀	± 0.5	16.0	16.0	16.0	—	—	—	—	—	—	—				
Sprocket hole diameter	φD ₀	± 0.2	4.0	4.0	4.0	4.0	4.0	4.0	4.0	4.0	4.0	4.0				
Tape thickness(total depth)	t	± 0.3	0.6	0.6	0.6	0.6	0.6	0.6	0.6	0.6	0.6	0.6				
Lead wire protrusion	ℓ	max.	0	0	0	0	0	0	0	0	0	0				
Cut position of interior Components	L ₁	max.	11.0	11.0	11.0	11.0	11.0	11.0	11.0	11.0	11.0	11.0				
Taping code(standard)	Zig-Zag type	+T	+T	+T	+T	+TO	+T	+TO	+T	+TS	+TS0	+TS	+TS0	+TS	+TS	+TS

Taping code has to be specified after the model number.

Model No. 16ME100HC+T

Taping code

+TO, +TS0 (0=Zero)

★1 Fig.2, Fig.3:±0.5

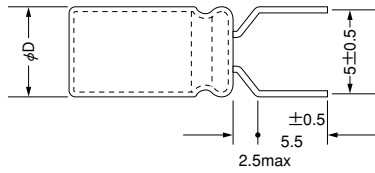
★2 φ10 · φ12.5 products (H=18.5): ± 1.5

★3 φ16 products:Skip one product at Fig.2

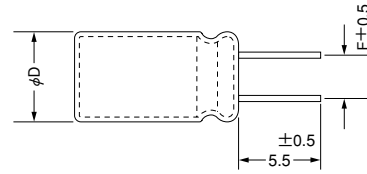
■ Radial Lead Type Process Standard Specifications (Unit:mm)

1. Lead wire forming

φD is limited to 5,6.3 or 8mm



2. Lead wire cutting



(Unit:mm)

φD	5	6.3	8	10	12.5	16	18
F	2.0	2.5	3.5	5.0	5.0	7.5	7.5

When ordering, please add the following notations to the end of the model number:

+FA for lead wire forming

+CA for lead wire cutting

Examples of model numbers:

16ME100HC+FA

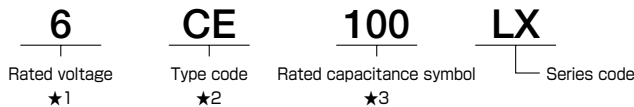
160ME22HPC+CA

When ordering a capacitor with a lead wire whose length is not listed above,

please keep in mind that the notation at the end of the model number changes. Inquire with your supplier.

■ Model No.

Examples of model numbers



★1. Rated voltage expresses a product mark with 6 about 6.3v.
 ★2. Type code

- CE: Surface mount type (Environmental products)
- ME: Radial lead type (Environmental products)
- MB: Radial lead type (Environmental products.sleeve less)
- CA: Surface mount type (Anti-vibration structure)
- EP-cap : Please refer to page 22 to 26

★3	Rated capacitance(μF)	Symbol
	0.47	R47
	1.0	1
	4.7	4R7
	10	10
	100	100
	1000	1000
	10000	10000

■ Minimum Packaging Quantity

● Long lead

Size	Quantity	Remarks reference
φ3 to φ8★1	500 PCS.	★1.φ8 X 125L to 20L ; 200 PCS. (WA, WG series Size φ8X11.5L:200 PCS) ★2.φ12.5 X 30L ; 100 PCS. ★3.φ16 X 35.5L ; 50 PCS. Surface Mount Type ; Please refer to page12
φ10 to φ12.5★2	200 PCS.	
φ16★3	100 PCS.	
φ18	50 PCS.	

● Taping

Size	Quantity
φ3 to φ4	4000 PCS.
φ5	3000 PCS.
φ6.3	2500 PCS.
φ8	1400 PCS.
φ10	900 PCS.
φ12.5	600 PCS.
φ16	250 PCS.

When you place an order, please make sure that order should be integral multiple of the minimum packing unit.